

THE LAW OFFICE OF <b>KRIS MUKHERJI</b> <sub>APC</sub> BUSINESS LAW & ESTATE PLANNING	
<b>FLOOR ONE</b>	
Alexander Law Office, P.L.C.	SUITE 117
AXA Advisors	SUITE 123
Robinson & Associates	SUITE 124
Skiba Financial Consultants	SUITE 129
<b>FLOOR TWO</b>	
H.R. Wickes Foundation	SUITE 202
Lynch Law Group, P.C.	SUITE 209
Prioleau & Associates, P.C.	SUITE 211
<b>FLOOR THREE</b>	
Watson Law Firm, LLC	SUITE 317
Rivers Law Firm	SUITE 323
Ramirez Financial	SUITE 324
Alexander Foundation, LLC	SUITE 329
<b>FLOOR FOUR</b>	
Minh Law Group	SUITE 417
PWR Advisors	SUITE 423
Lee & Associates	SUITE 424
Jackson & Rous Group	SUITE 429
<b>FLOOR FIVE</b>	
Kris Mukherji, APC	SUITE 517



# E-INK SIGNAGE DISPLAY

## 32" EPD320M-IE

## 32" INDOOR DIGITAL SIGNAGE

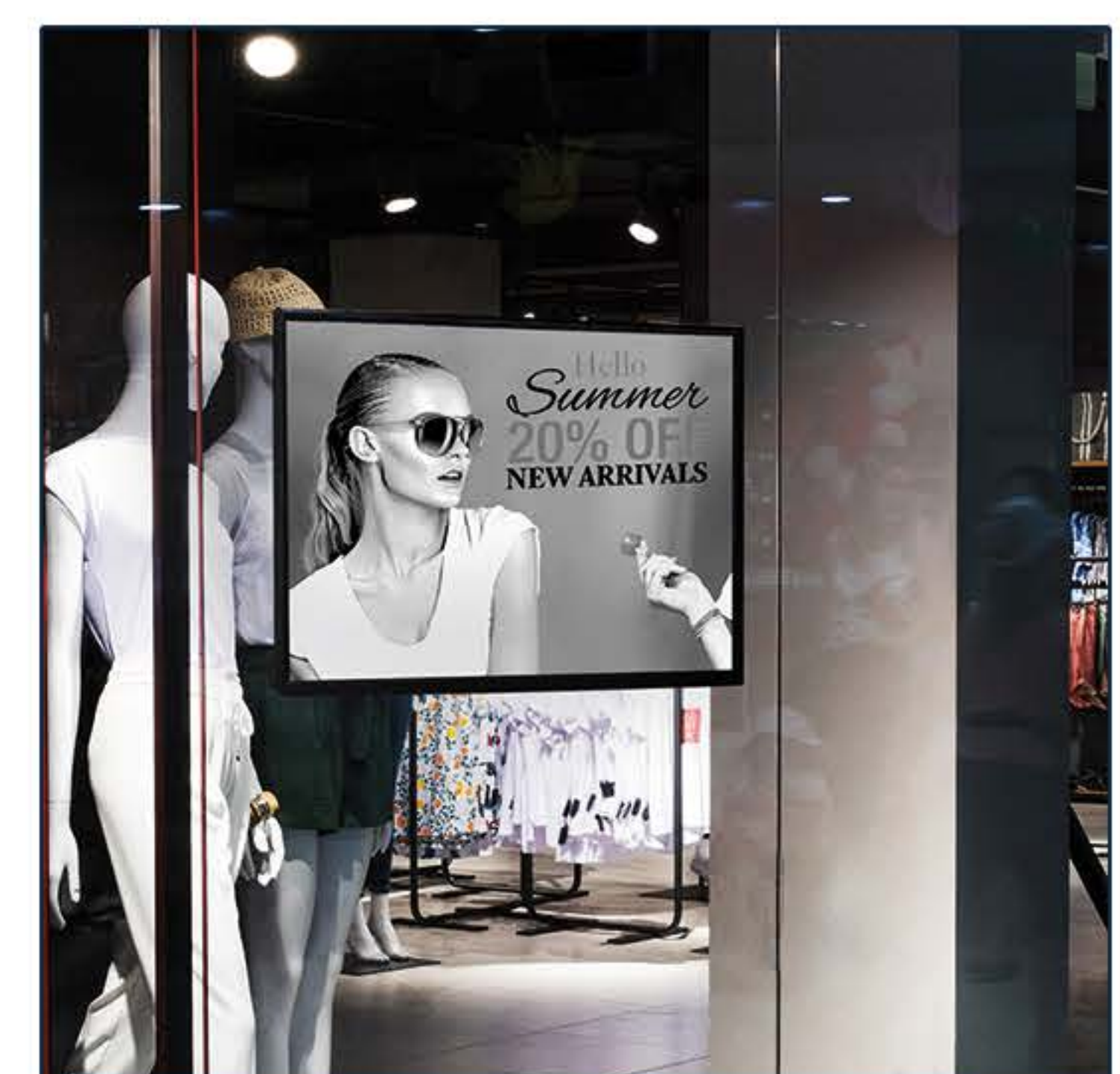
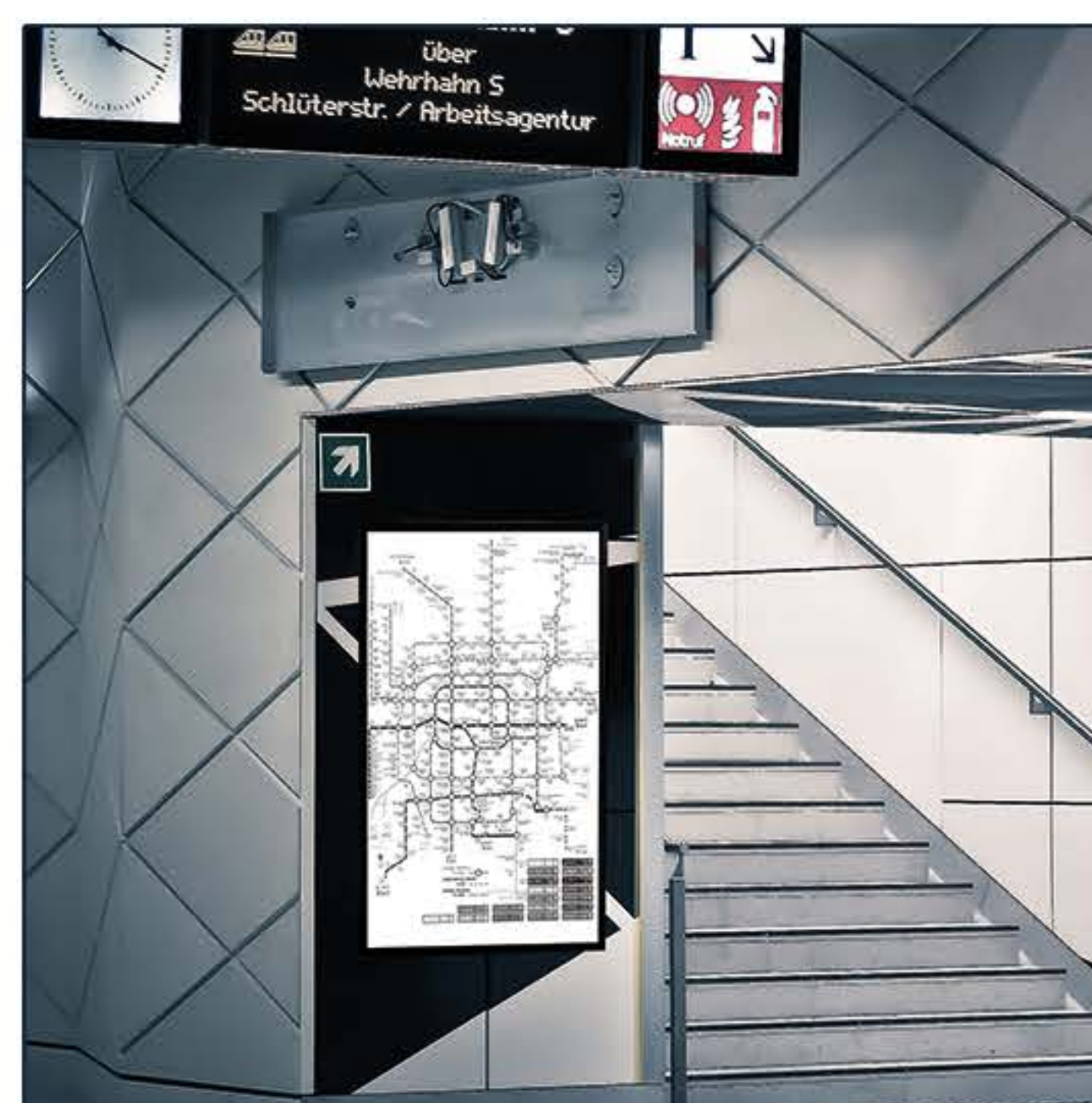
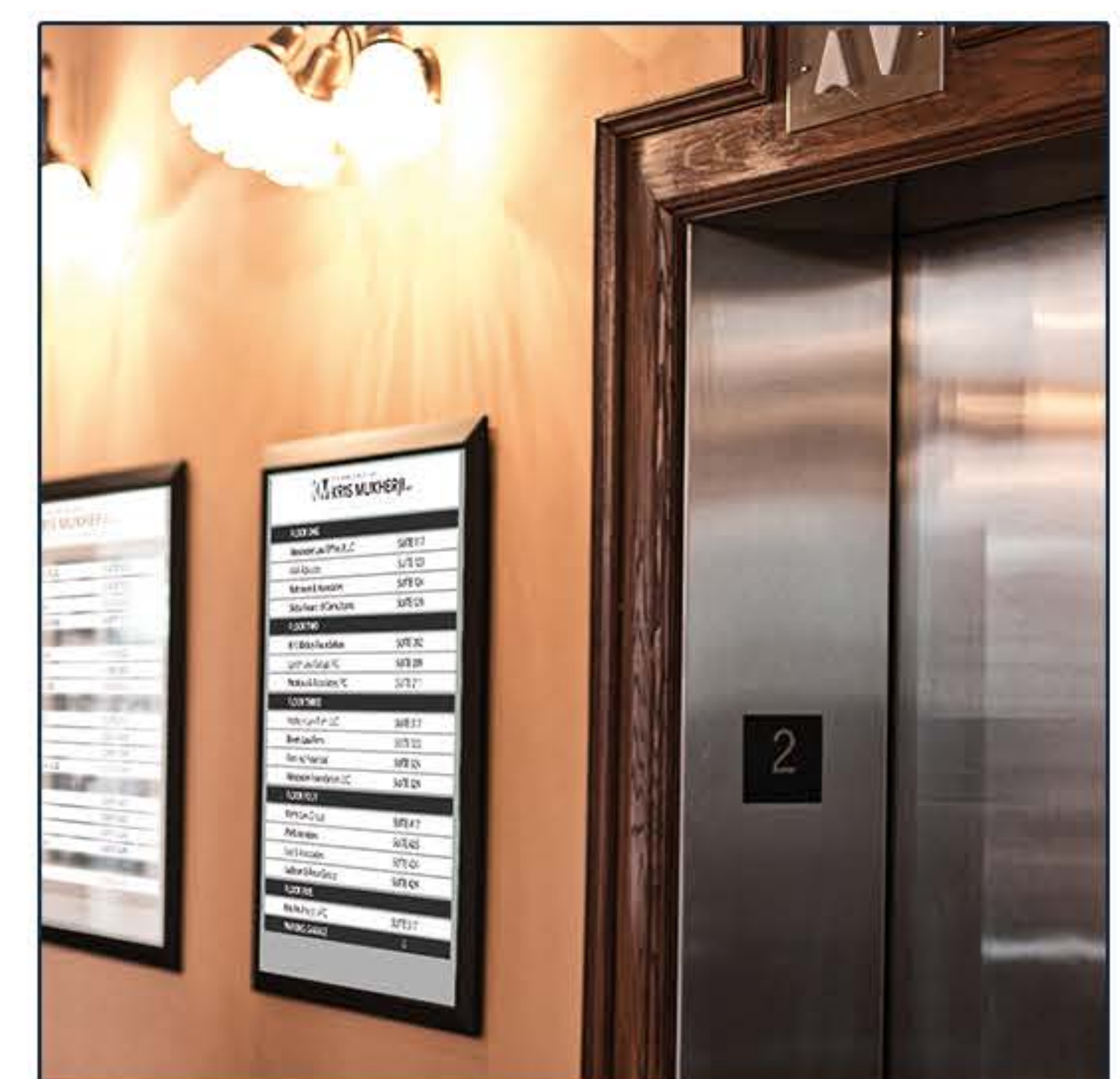
EPD320M-IE

Introducing the EPD320M-IE 32 inch Electronic Paper Display from TeamUC Inc. The TeamUC EPD320M-IE is a high-resolution display with amazing clarity that comes in color. The unit requires minimal power making it versatile for applications across various industries/markets. Like looking at actual paper, the visual output is soothing yet comforting to the eye, eliminating the possibility of eye strain from screen exposure.

TeamUC EPD320M-IE displays are perfectly suited for implementation under various environments such as Menu/Message boards in retail, Directory/Info boards in Healthcare/Medical, Real-time route updates at bus stops, and also for special types of writing such as Calligraphy. You just can't go wrong with the EPD320M-IE from TeamUC.

### FEATURES

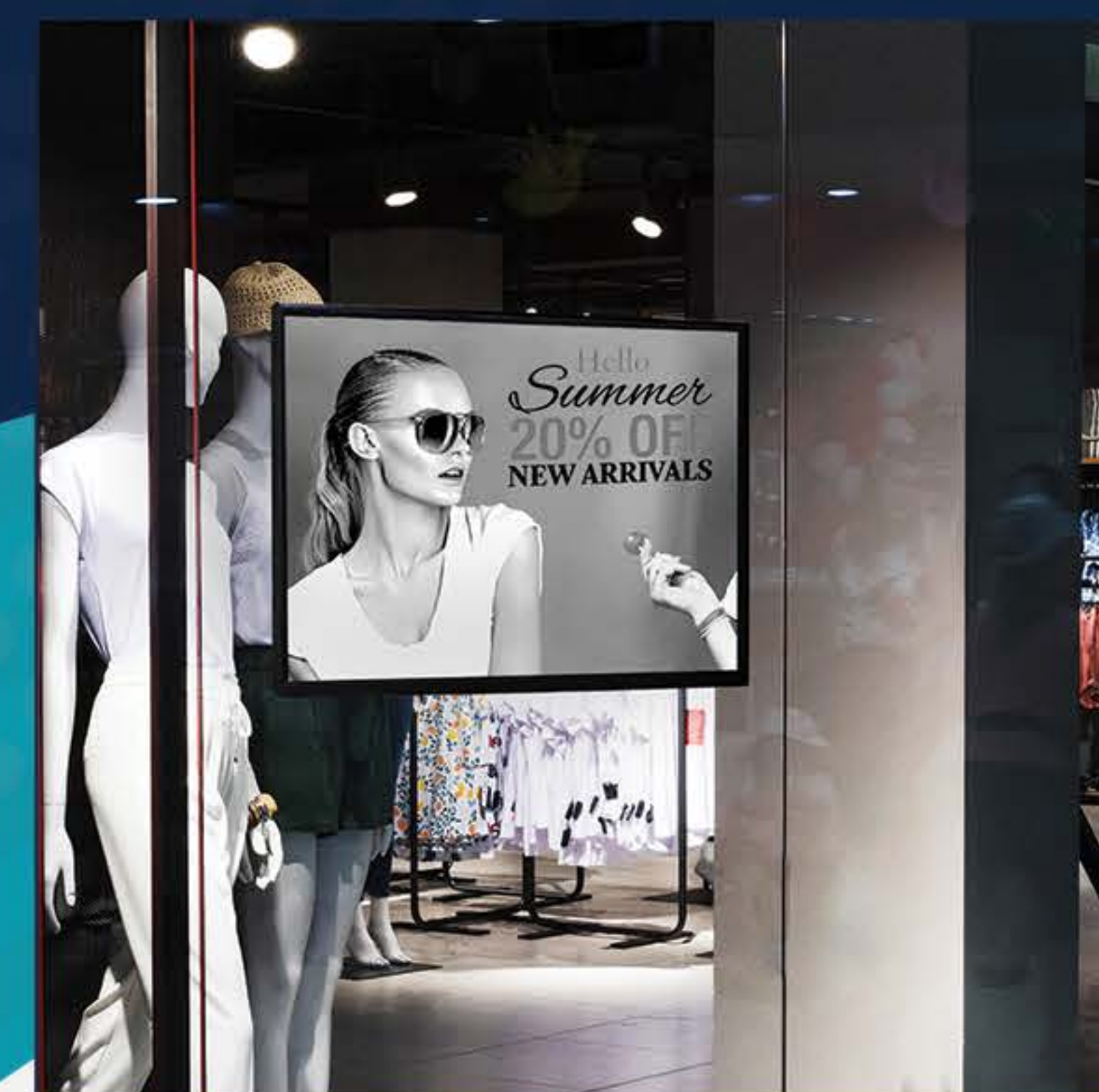
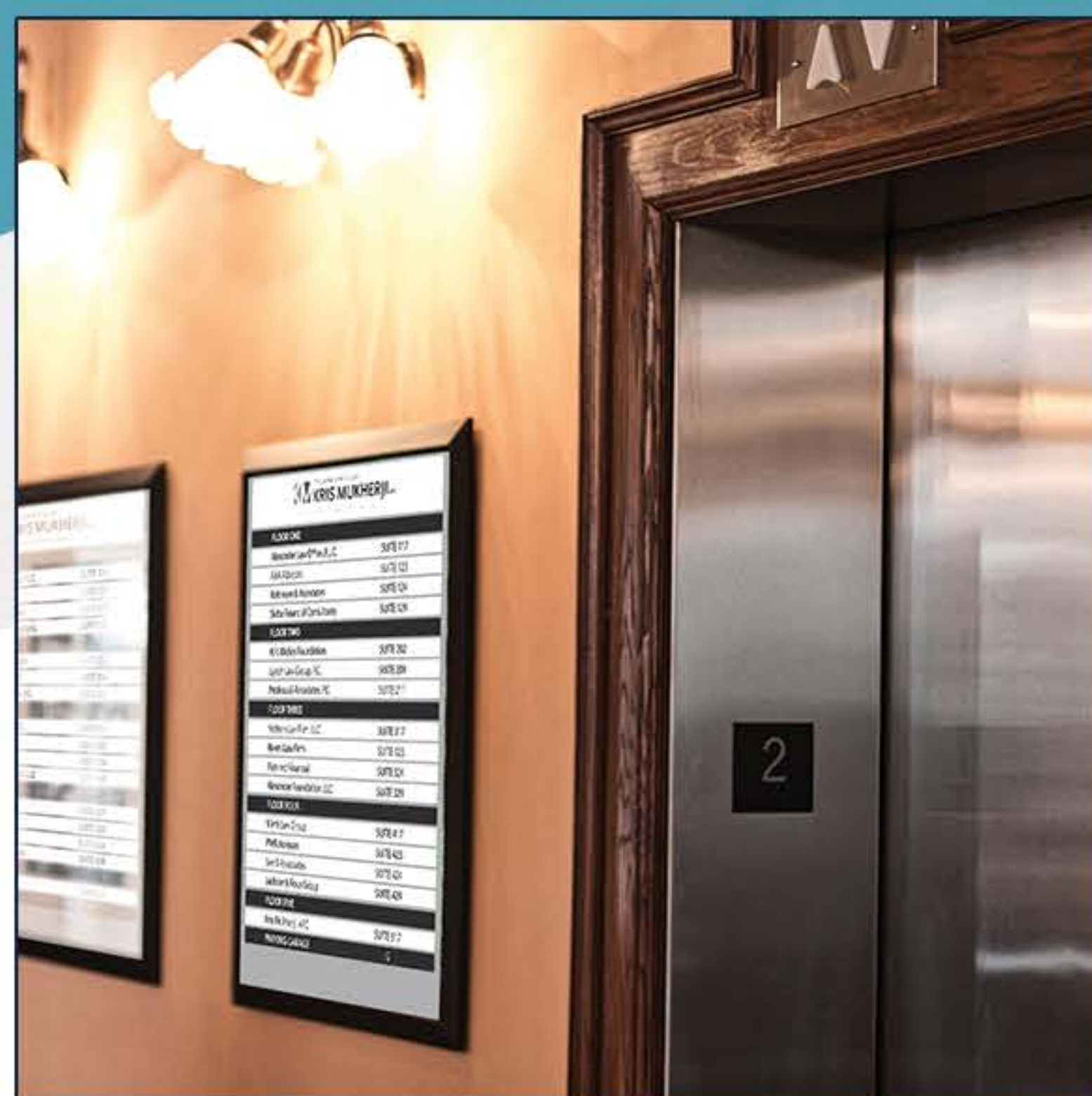
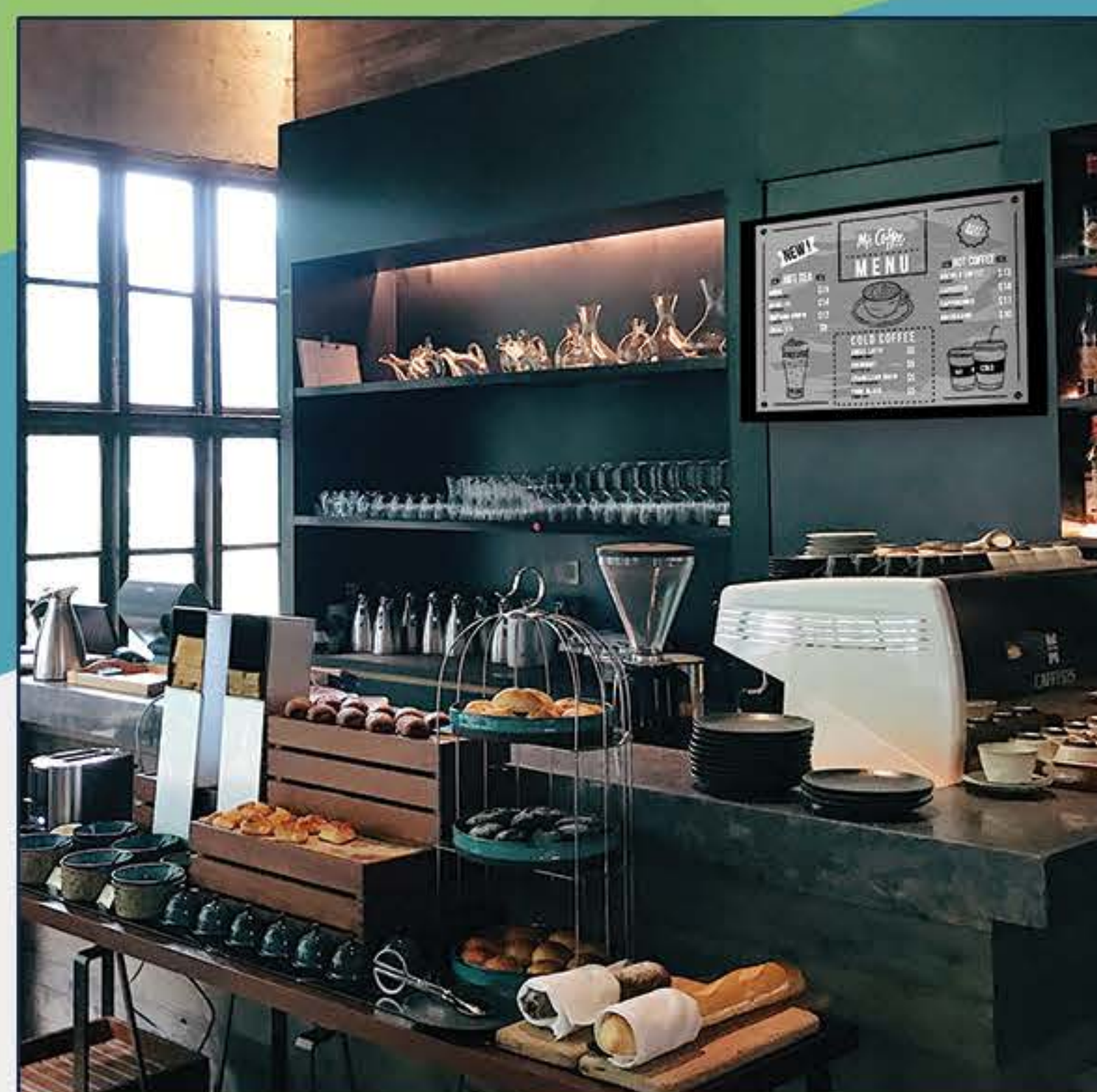
- Wide Viewing Angle
- Amazing Clarity under the sunlight
- Build-in Battery indicator
- Bi-Directional Data Transmission





# 32" EPD INDOOR SIGNAGE

EPD320M-IE



## Technical Specifications

<b>Model</b>	EPD320M-IE
<b>Size</b>	32"
<b>Screen Technology</b>	E Ink Monochrome
<b>Resolution</b>	2561 × 1440
<b>Color</b>	16 Gray Level
<b>Contrast Ratio</b>	13:1
<b>Flash Size</b>	eMMC 8G
<b>DDR</b>	DDR 512MB
<b>G Sensor</b>	For Portrait Mode & Landscape Mode
<b>Button</b>	Power on/off. Reset
<b>Connectivity</b>	Wi-Fi, BT4.1, Ethernet
<b>OS</b>	Android 4.4 or up
<b>Power Type</b>	DC (12V/4A)
<b>Bezel Width</b>	5.7mm/5.7mm/5.7mm/15mm (Left/Right/Top/Bottom)
<b>Mounting</b>	VESA mount 200mmX200mm
<b>External Dimension</b>	703.6 x 410.5 x 8.8mm (With 2mm tempered Glass)
<b>Weight</b>	6.5 Kg/14lb
<b>Operating Temperature</b>	0°C~50°C