



## ELECTRONIC SHELF TAG 1.5-INCH / COLOR



## ELECTRONIC SHELF TAG

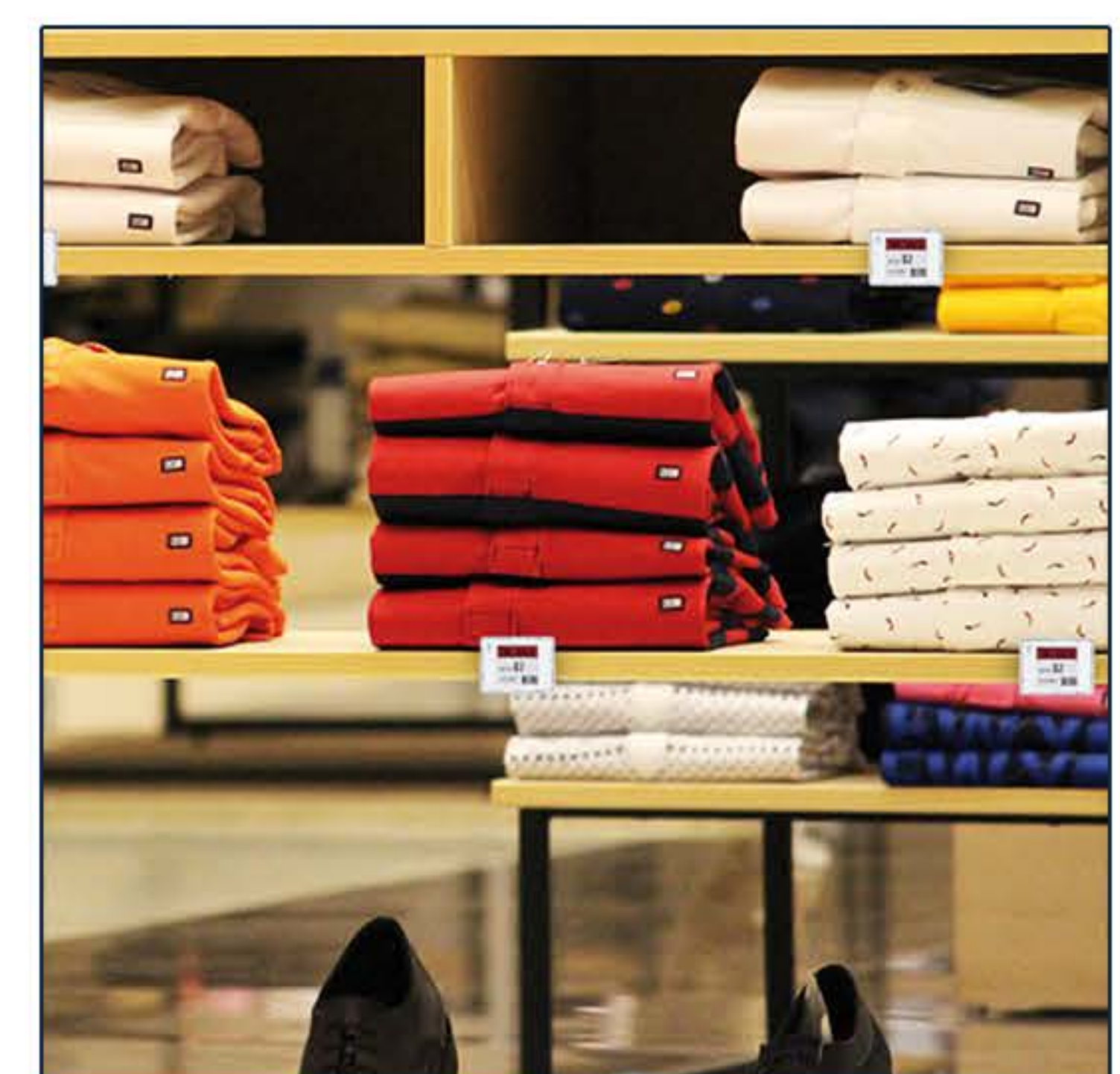
### ESL150C

The TeamUC 1.5" ESL150C is a low-powered, easy-to-read electronic shelf tag whose display can easily be updated from a remote area such as a back office or a central location. Embedded with E Ink technology, its screen is gentle on the eyes and is easy-to-read even under direct sunlight. The ESL150C is environment-friendly because it saves paper by not printing tags as well as business-friendly because labor isn't needed for manually changing them.

The ESL150C is perfectly suited for use in retail by giving businesses the ability to update pricing as often as they need, and to display promotions, inventory levels, and more. For those in the packaging and shipping industry, the ESL150C can be used to efficiently manage their inventories and transform their workspace into a Smart Warehouse. Usher in the future with this next generation tag.

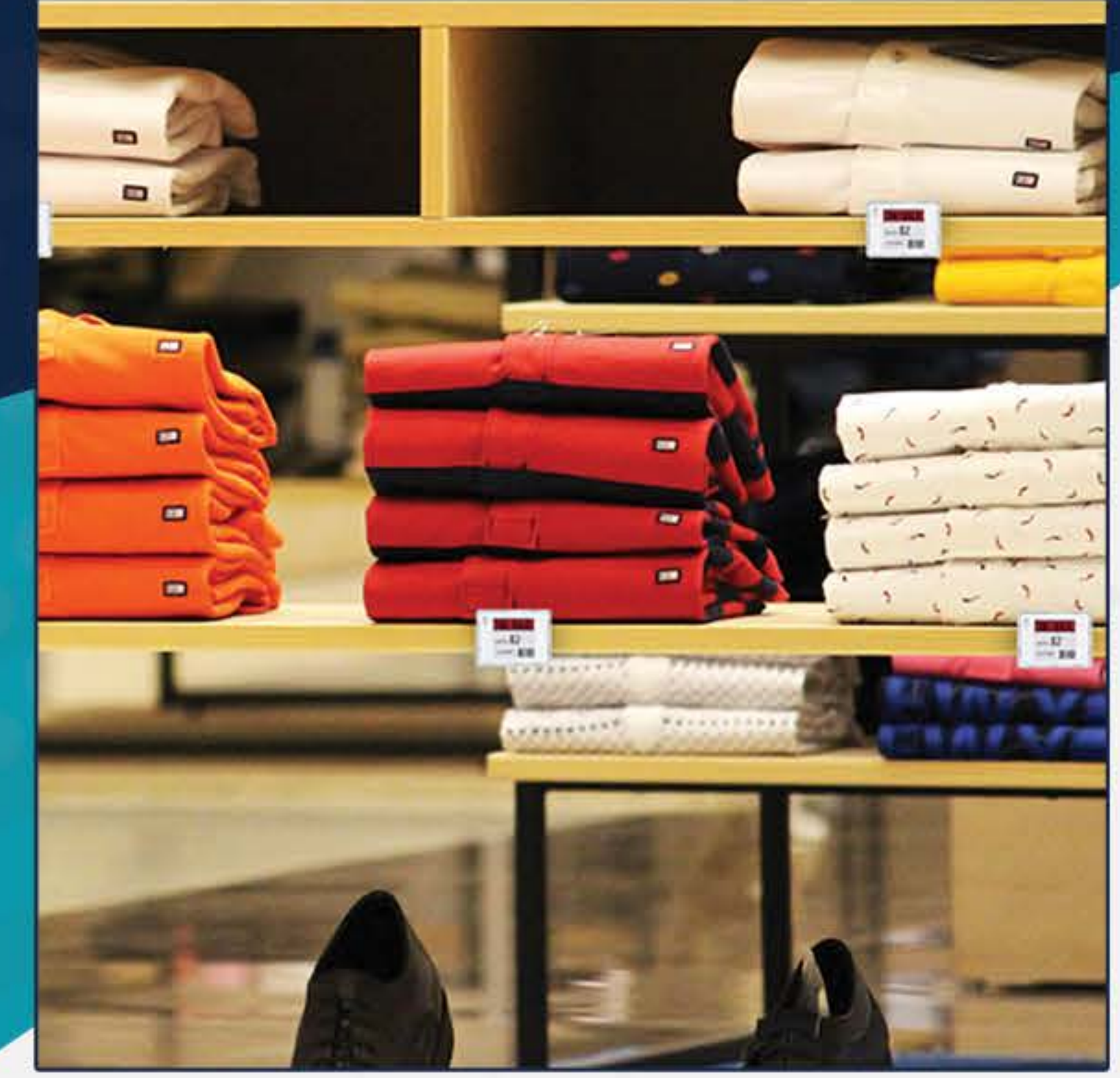
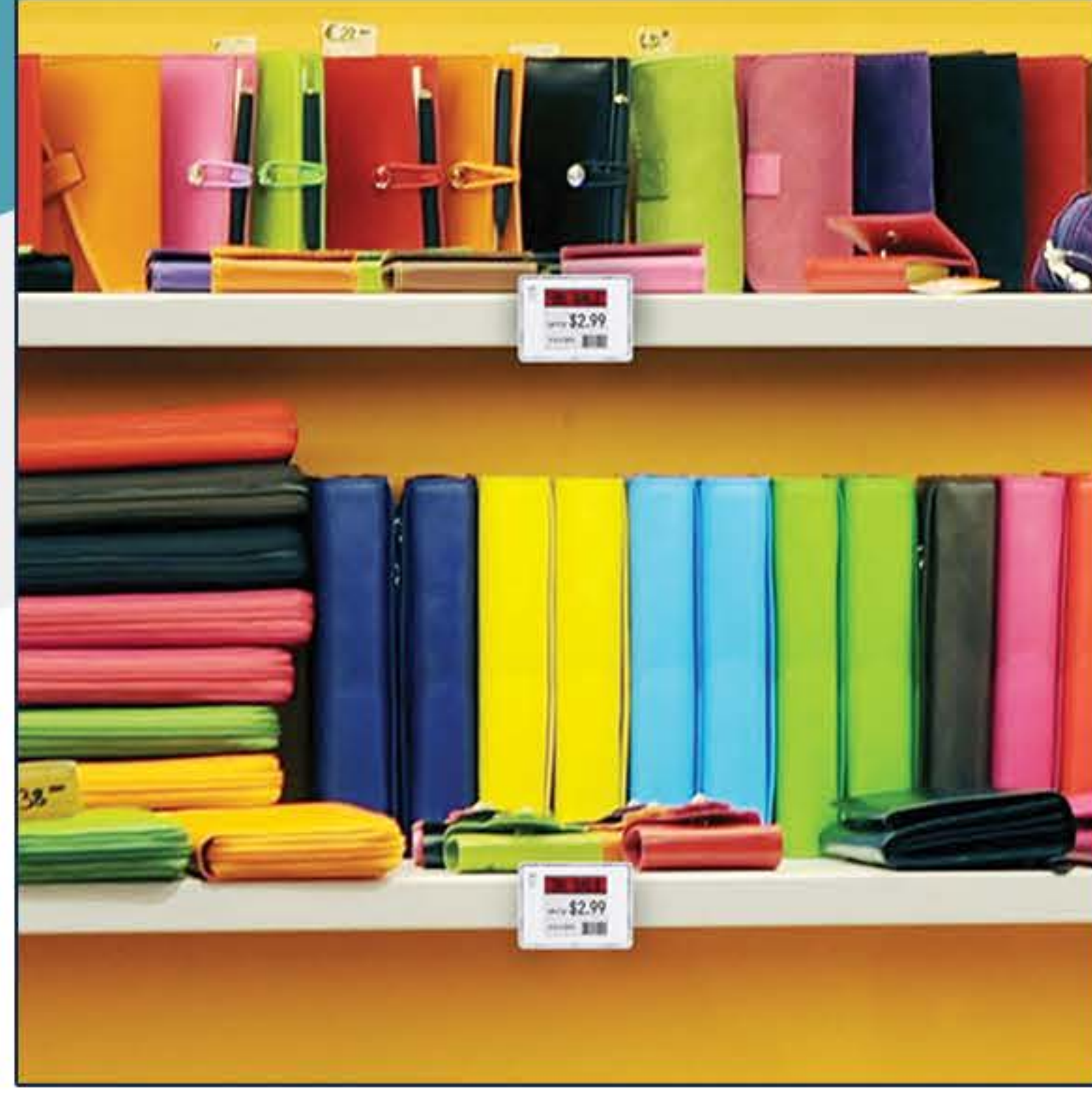
### FEATURES

- 3-Color Black/White/Red display
- Low power consumption
- Remotely updateable
- Built-in battery monitor
- 5-Year battery life with three updates per day
- Slim and compact size
- Superior readability under all lighting conditions
- NFC Support (Optional)



# 1.5" ELECTRONIC SHELF TAG

ESL150C



## Technical Specifications

<b>Model</b>	ESL150C
<b>Display</b>	1.54"
<b>Resolution</b>	200x200
<b>Color</b>	Black/White/Red
<b>DPI</b>	188
<b>Status LED</b>	Single color LED, LED's color: Orange
<b>Wireless Interface</b>	Zigbee (2.4GHz)
<b>NFC</b>	Optional
<b>RSSI (Radio Strength Index)</b>	On display while deployment
<b>Battery Type</b>	CR 2450*1Pc
<b>Battery Changeable</b>	Yes
<b>Operating Voltage</b>	3V
<b>Operating Temperature</b>	0~30°C
<b>Dimension (WxHxD mm)</b>	49.5x37.5x13.4 mm
<b>Weight</b>	22.2g/0.049lb (including battery)