



ELECTRONIC SHELF TAG 4.2-INCH / COLOR



ELECTRONIC SHELF TAG

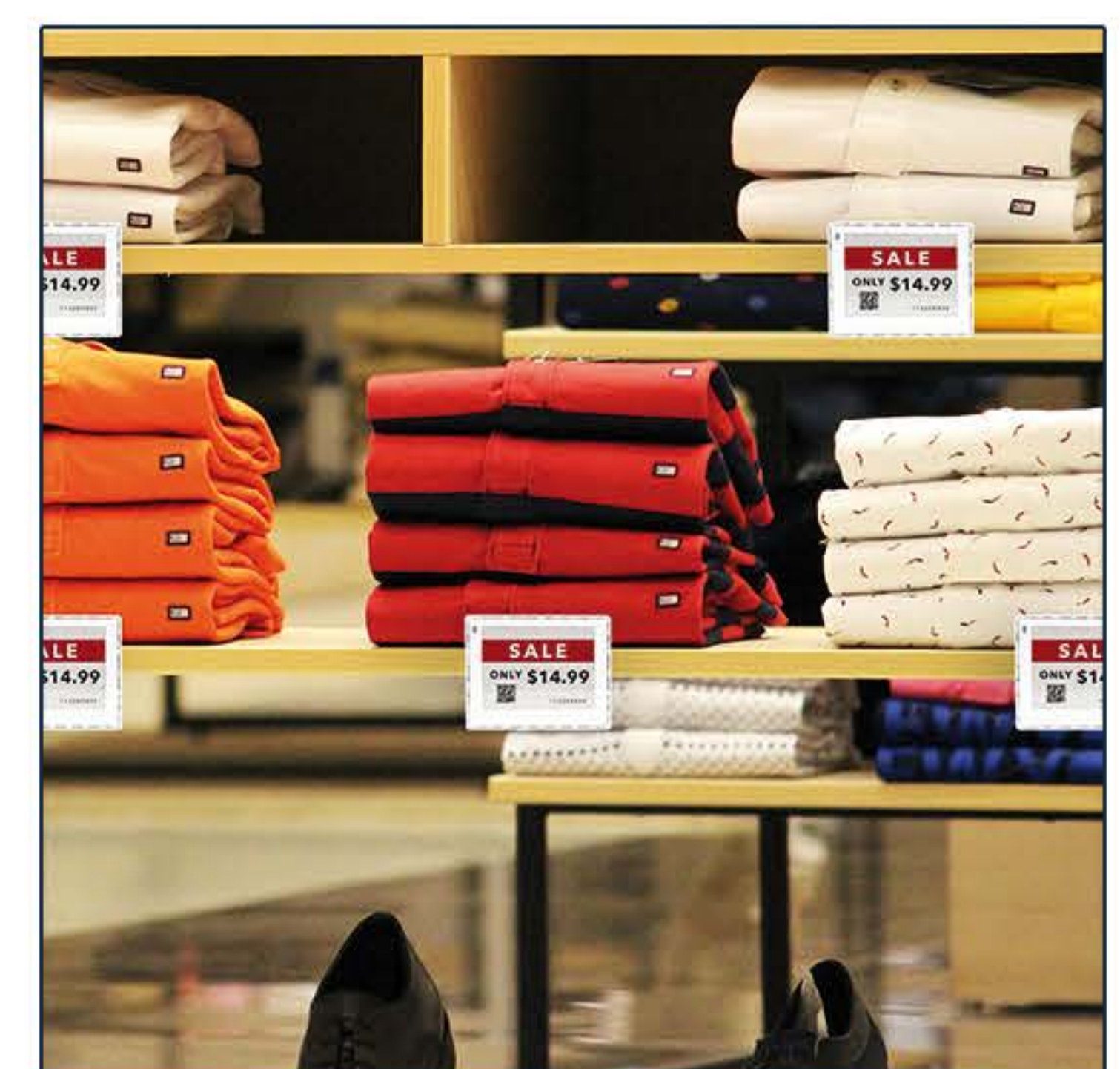
ESL420C

The TeamUC 4.2" ESL420C is a low-powered, easy-to-read electronic shelf tag whose display can easily be updated from a remote area such as a back office or a central location. Embedded with E Ink technology, its display is gentle on the eyes and is easy-to-read even under direct sunlight. Not only is the ESL420C environment-friendly as it saves paper from not having to print tags, but it is also business-friendly because labor isn't needed for manually changing them.

The ESL420C is perfectly suited for use in retail such as grocery stores, department stores, and clothing stores, by giving retailers the ability to update pricing as often as they need, as well as to display promotions, social reviews, inventory levels, and more. For those in the packaging and shipping industry, the ESL420C can be used to efficiently manage their inventories and transform their workspace into a Smart Warehouse. Usher in the future with this next generation tag.

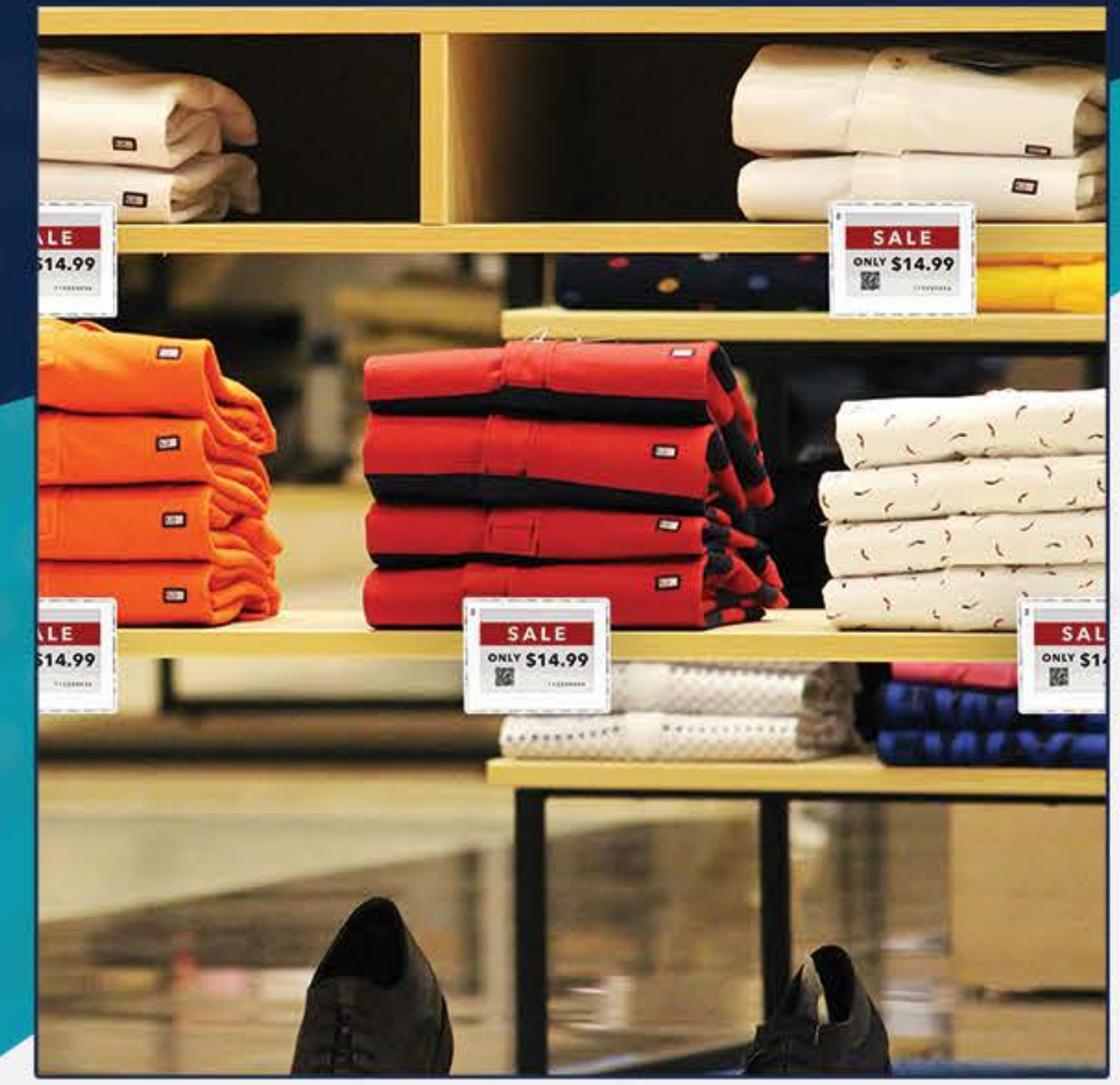
FEATURES

- 3-Color Black/White/Red display
- Low power consumption
- Remotely updateable
- Built-in battery monitor
- 5-Year battery life with three updates per day
- Slim and compact size
- Superior readability under all lighting conditions
- NFC Support (Optional)



4.2" ELECTRONIC SHELF TAG

ESL420C



Technical Specifications

Model	ESL420C
Display	4.2"
Resolution	400 x 300
Color	Black/White/Red
DPI	119
Status LED	Single color LED, LED's color: Orange
Wireless Interface	Zigbee (2.4GHz)
NFC	Optional
RSSI (Radio Strength Index)	On display while deployment
Battery Type	CR 2450*3Pcs
Battery Changeable	Yes
Operating Voltage	3V
Operating Temperature	0~30°C
Dimension (WxHxD mm)	109x87.5x15.1 mm
Weight	110.9g/0.244lb (including battery)