



ELECTRONIC SHELF TAG 5.65-INCH / COLOR



ELECTRONIC SHELF TAG

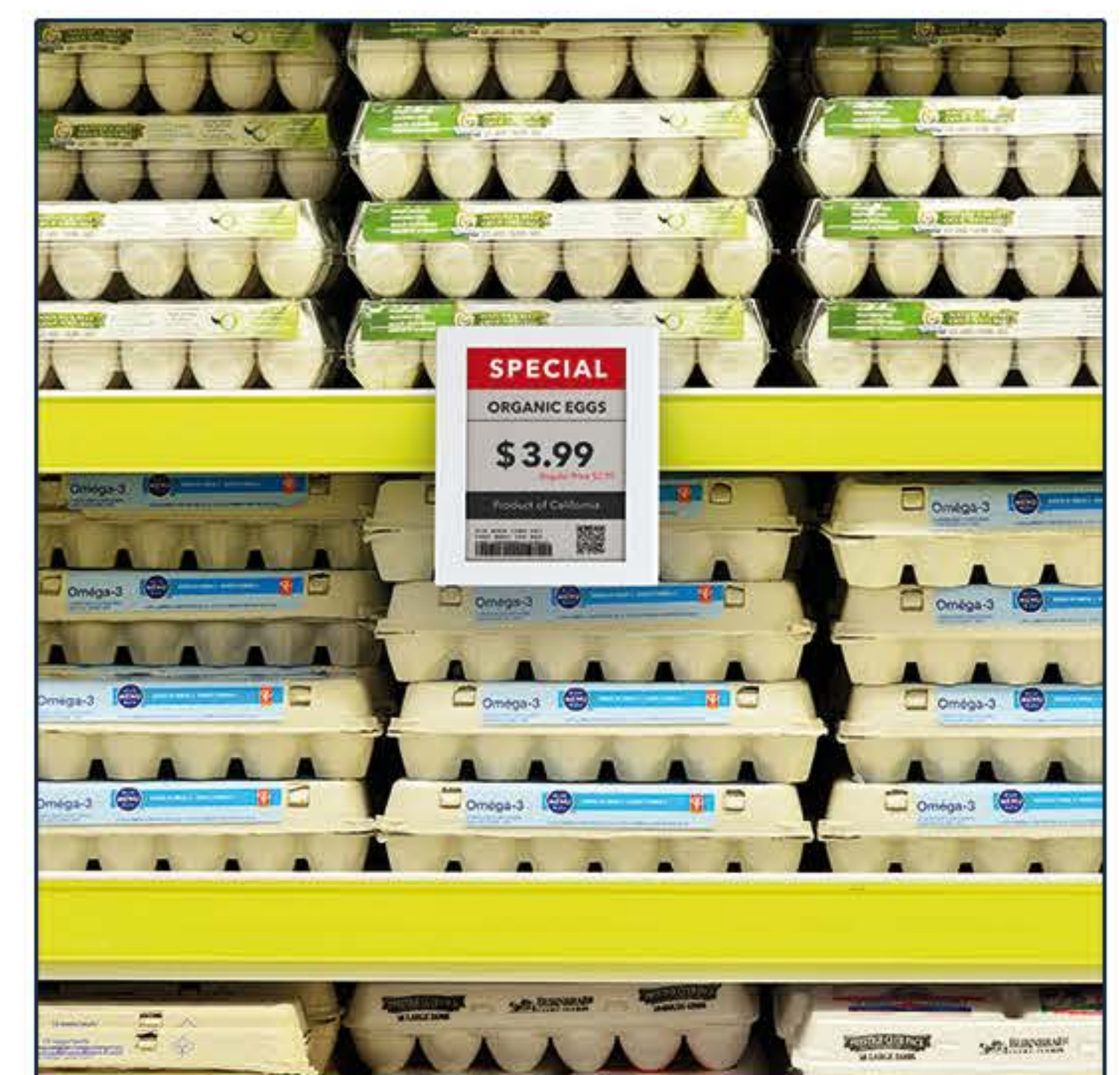
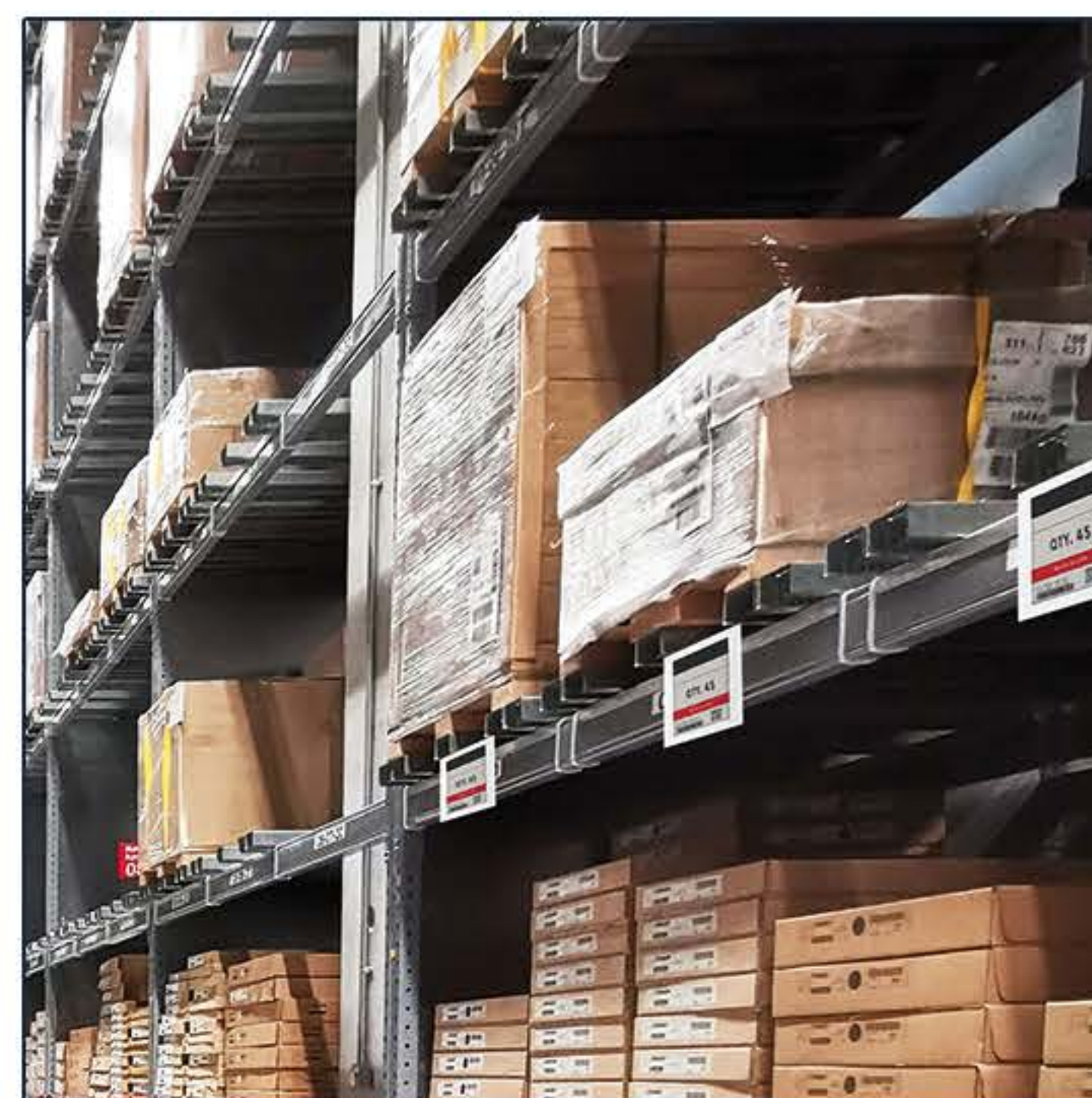
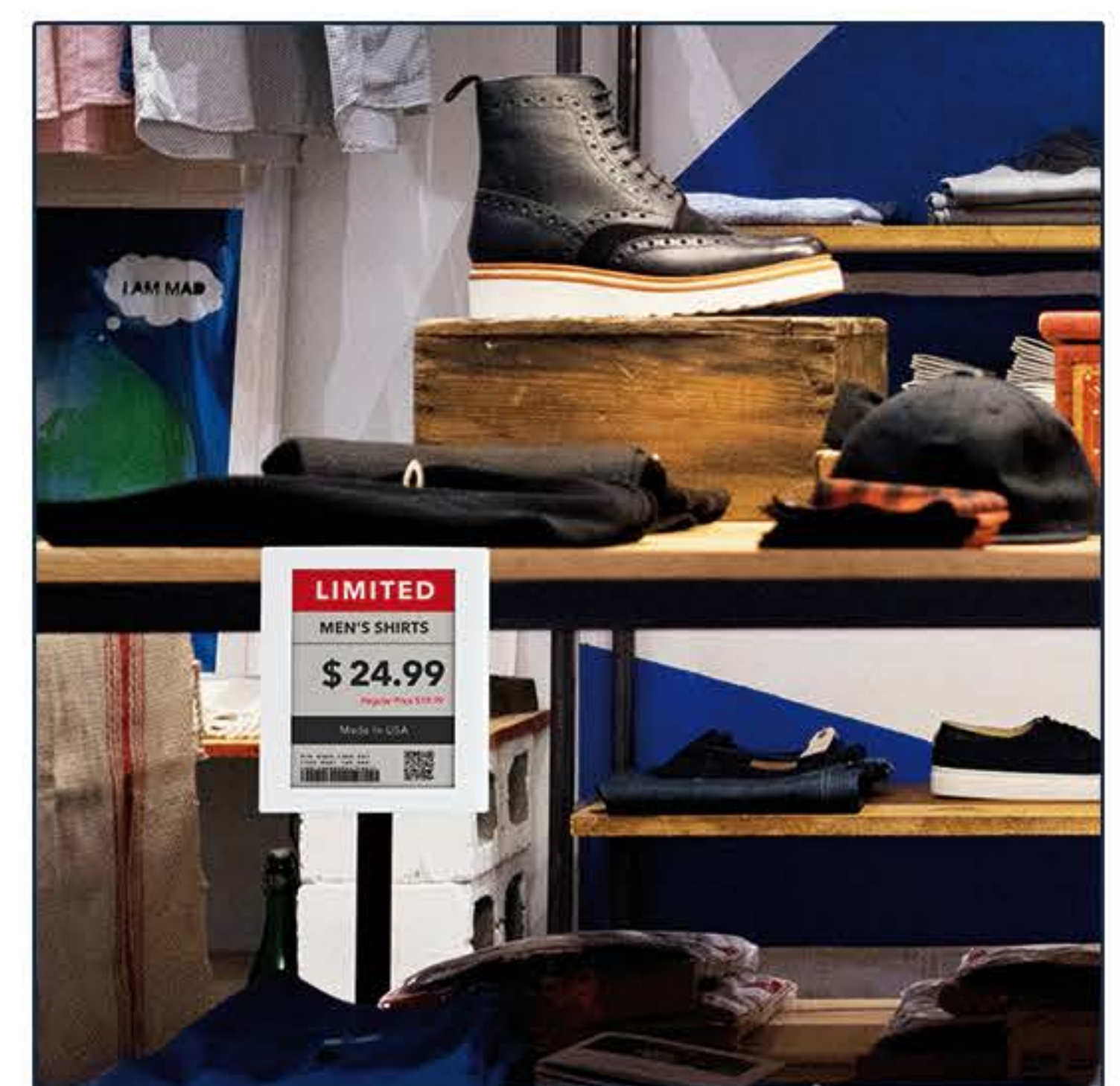
ESL565C

The TeamUC 5.65" ESL565C is a low-powered, easy-to-read electronic shelf tag whose display can easily be updated from a remote area such as a back office or a central location. Embedded with E Ink technology, its screen is gentle on the eyes and is easy-to-read even under direct sunlight. The ESL565C is environment-friendly because it saves paper by not printing tags as well as business-friendly because labor isn't needed for manually changing them.

The ESL565C is perfectly suited for use in retail by giving businesses the ability to update pricing as often as they need, and to display promotions, inventory levels, and more. For those in the packaging and shipping industry, the ESL565C can be used to efficiently manage their inventories and transform their workspace into a Smart Warehouse. Usher in the future with this next generation tag.

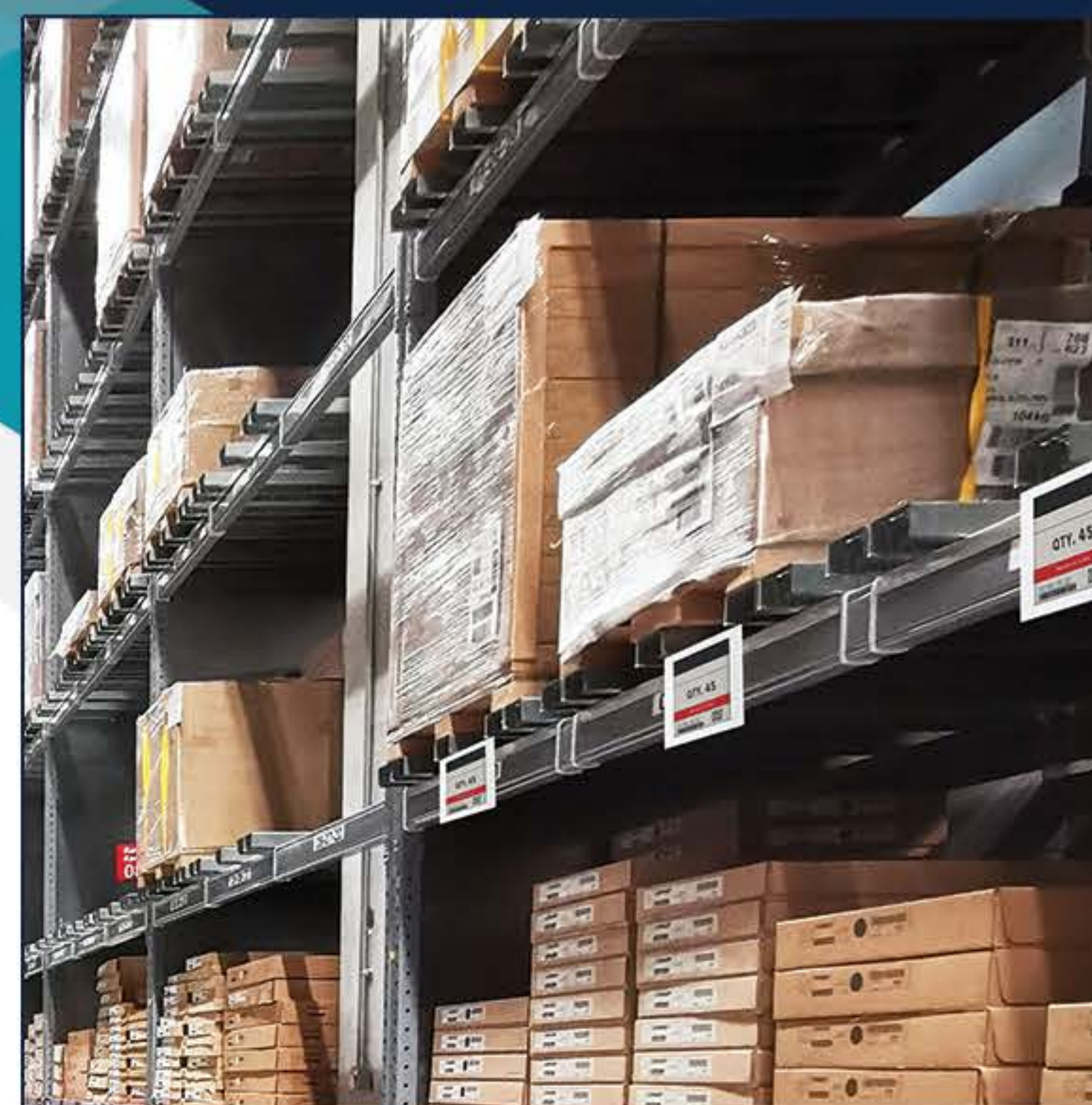
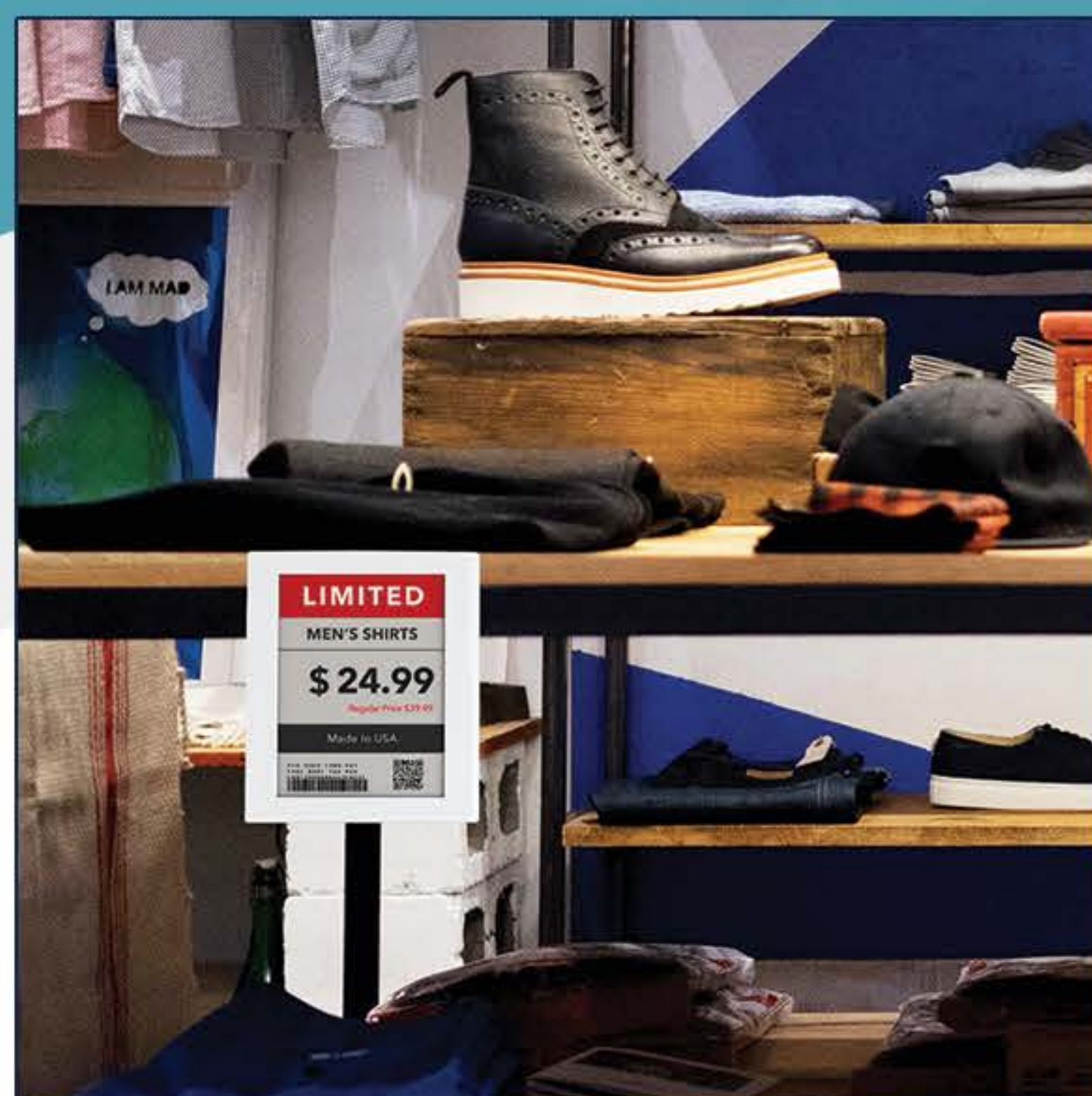
FEATURES

- 3-Color Black/White/Red display
- Low power consumption
- Remotely updateable
- Built-in battery monitor
- 3-Year battery life with three updates per day
- Slim and compact size
- Superior readability under all lighting conditions



5.65" ELECTRONIC SHELF TAG

ESL565C



Technical Specifications

Model	ESL565C
Display	5.65"
Resolution	600 x 448`
Color	Black/White/Red
DPI	132
Status LED	Single color LED, LED's color: Orange
Wireless Interface	Zigbee (2.4GHz)
RSSI (Radio Strength Index)	On display while deployment
Battery Type	AAA*4pcs
Battery Changeable	Yes
Operating Voltage	3V
Operating Temperature	0~40°C
Dimension (WxHxD mm)	140.7x121x20.6 mm
Weight	215.9g/0.476lb (including battery)